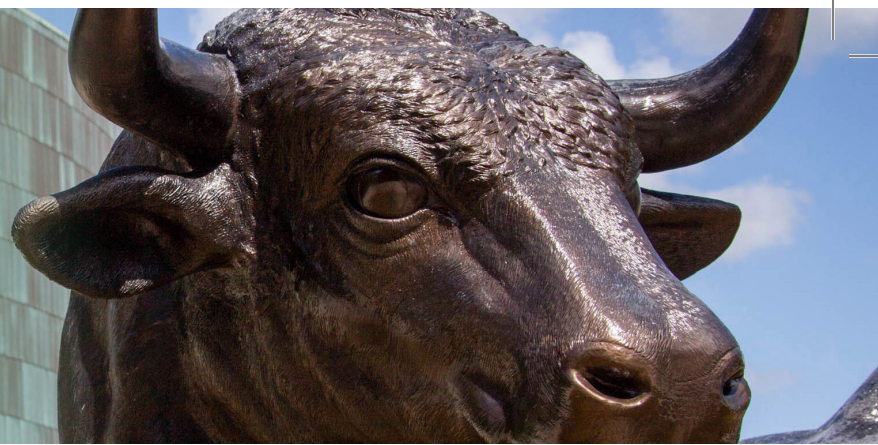


USF Tampa is a Carnegie-classified Doctoral Granting Research University, Highest Research Activity.

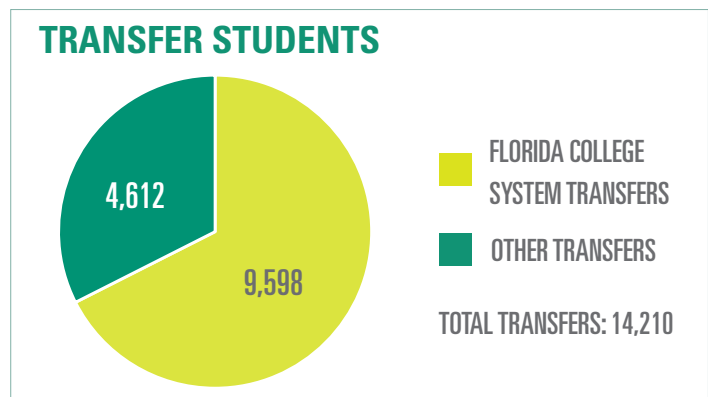
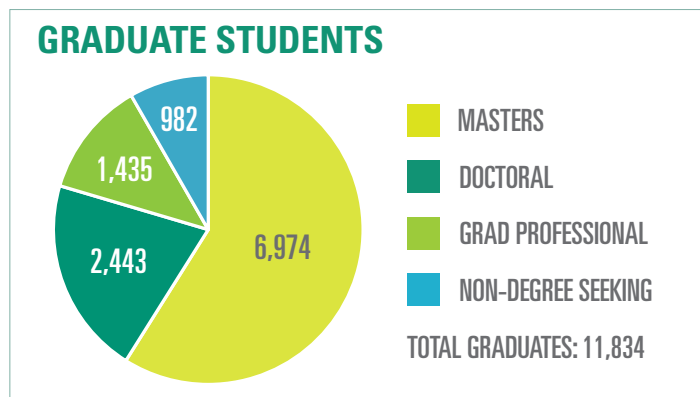


The University of South Florida, established in 1956 and located in Tampa, is a high-impact, global research university dedicated to student success. The USF System includes three, separately accredited institutions: USF; USF St. Petersburg; and USF Sarasota-Manatee. Serving more than 50,000 students, the USF System has an annual budget of \$1.8 billion and an annual economic impact of \$4.4 billion. USF is ranked in the Top 30 nationally for total research expenditures among public universities, according to the National Science Foundation. In 2016, the Florida Legislature designated USF as "Emerging Preeminent," placing USF in an elite category among the state's 12 public universities. USF is a member of the American Athletic Conference.

STUDENT ACCESS

STUDENT PROFILE | FALL 2017

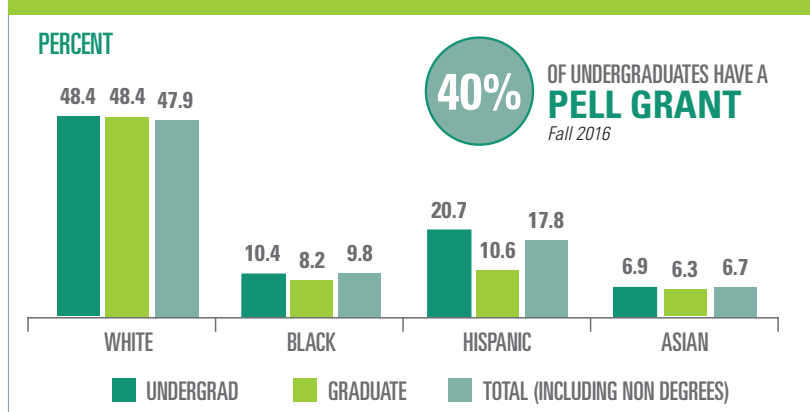
TOTAL STUDENTS	UNDERGRADUATE	MASTERS	DOCTORAL	GRAD PROFESSIONAL	NON DEGREE
43,675	30,919	6,974	2,443	1,435	1,904



NEW FIRST TIME IN COLLEGE (FTIC)

- TOTAL HEADCOUNT **2552**
- AVERAGE SAT **1279**
- AVERAGE HS GPA **4.12**
- TOP 10% & TOP 20% HS **50% & 75%**

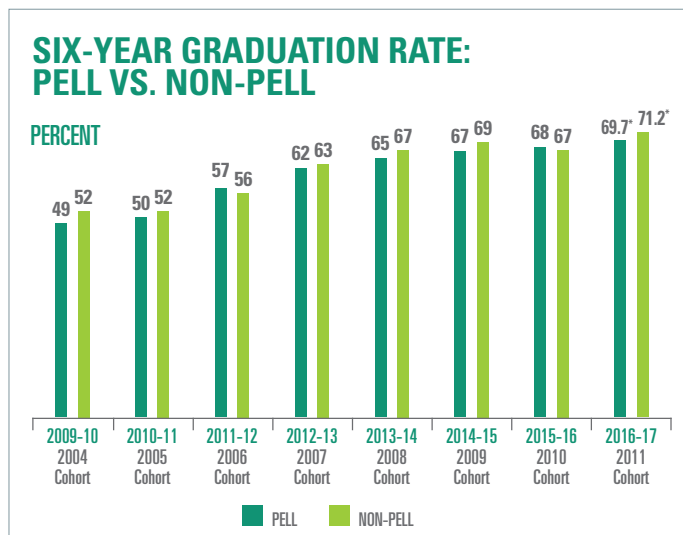
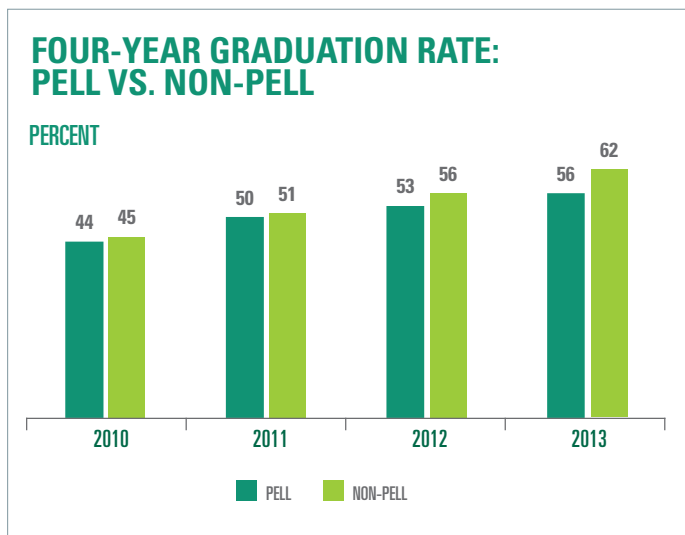
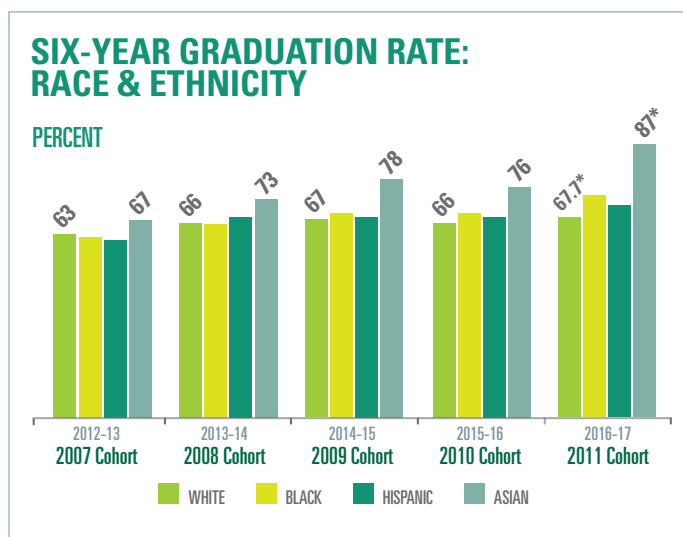
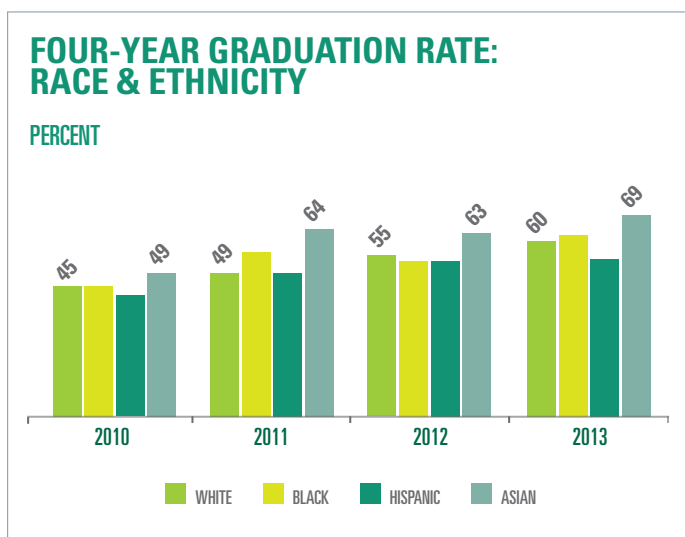
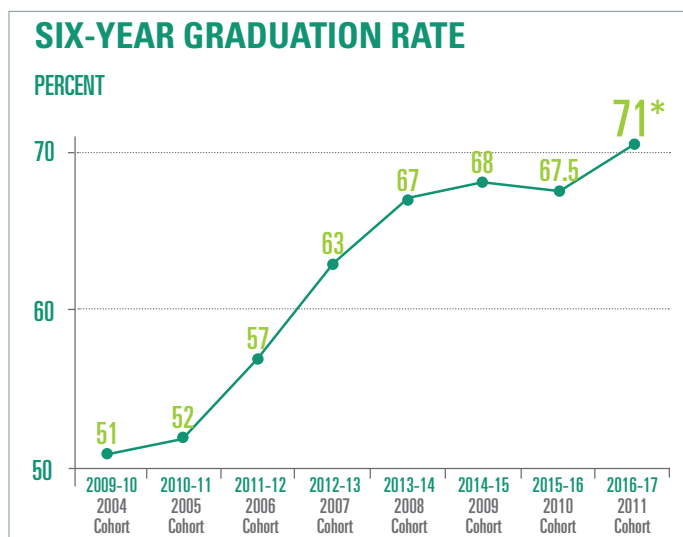
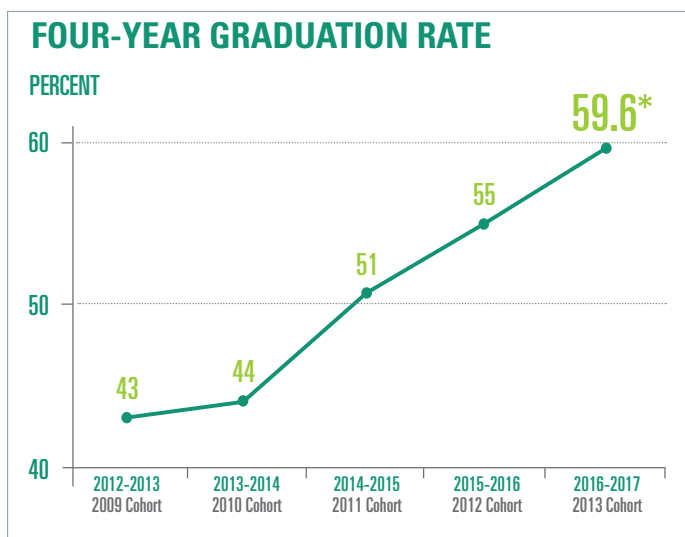
UNDERGRADUATE AND GRADUATE: STUDENT DIVERSITY



Unless otherwise noted, data is reported as of Fall 2017

www.usf.edu/ods

STUDENT SUCCESS - FTIC



Source IPEDS *Data reported follows IPEDS methodology but are based on internal preliminary data

www.usf.edu/student-affairs-success